

Light efficiency:

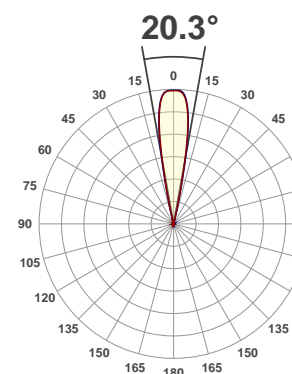
20 Lumen/Watt

Light quality:

CRI: 84.7

Color temperature:

4728 K



Product name:

DW Par Z19 IP

Test:

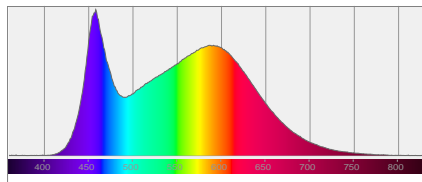
Zoom 50% Full On

Date:

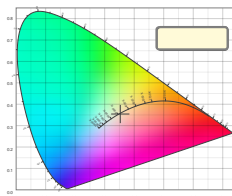
6/15/2017

Output: 4811 lm Power consumption: 238 W Peak: 45319 cd

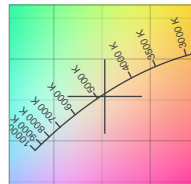
Spectral distribution



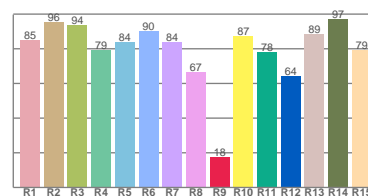
Color coordinates



Zoom color point

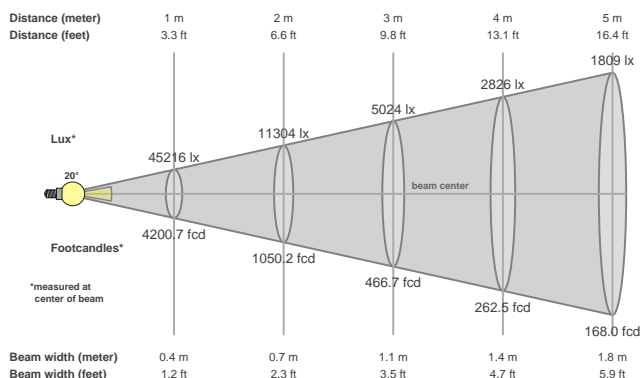


CRI R values



Color temperature	Color rendering index	Red component	Color fidelity	Color gamut	Color quality scale	Color coordinate cie 1931	Color coordinate cie 1931	Color coordinate	Color coordinate	Color divition from black body
CCT	CRI	CRI R9	TM30 Rf	TM30 Rg	CQS	x	y	u	v	Δuv
4728 K	84.7	17.8	80.5	91.4	82.0	0.353	0.354	0.216	0.325	0.0017

Beam details



Beam angels

Beam angle 50%	Field angle 10%	Cutoff angle 2,5%
20.3°	26.1°	28.7°

Beam intensities

Peak intensity	Int. ratio in 120° cone	Int. ratio in 90° cone
45319 cd	1.0%	1.0%

Power

Power	Power factor	Power frequency
238 W	0.99	60 Hz

Nominal voltage	Voltage	Current
230 V	115 V	2.07 A

Beam intensities from 1-20m

1m	2m	3m	4m	5m	6m	7m	8m	9m	10m	11m	12m	13m	14m	15m	16m	17m	18m	19m	20m
3.3ft	6.6ft	9.8ft	13.1ft	16.4ft	19.7ft	23ft	26.2ft	29.5ft	32.8ft	36.1ft	39.4ft	42.7ft	45.9ft	49.2ft	52.5ft	55.8ft	59.1ft	62.3ft	65.6ft
45216lx	11304lx	5024lx	2826lx	1809lx	1256lx	923lx	707lx	558lx	452lx	374lx	314lx	268lx	231lx	201lx	177lx	156lx	140lx	125lx	113lx
4200.7fcd	1050.2fcd	466.7fcd	262.5fcd	168fcd	116.7fcd	85.7fcd	65.6fcd	51.9fcd	42fcd	34.7fcd	29.2fcd	24.9fcd	21.4fcd	18.7fcd	16.4fcd	14.5fcd	13fcd	11.6fcd	10.5fcd